

**SÉRIE IT-1102**

**Interruptor tátil**

Dimensão 6,0mm x 6,0mm x H  
 Operação posição vertical ou horizontal



**Aplicações**

Audio, TV, DVD player, telefone celular, câmera digital e todo tipo de equipamentos eletro-eletrônicos



**Especificações :**

<b>Elétrica</b>	<b>Capacidade máxima de Comutação :</b>	12Vcc 50mA
	<b>Resistência de contato</b>	100 mΩ máximo
	<b>Resistência de isolamento</b>	100 MΩ (500Vcc / 1 minuto)
	<b>Rigidez Dielétrica</b>	250Vca / 1 minuto
<b>Mecânica</b>	<b>Força de operação</b>	160gf ± 30gf ou 260gf ± 50gf
	<b>Curso do botão</b>	0,25 ± 0,1mm
	<b>Durabilidade</b>	100.000 mínimo

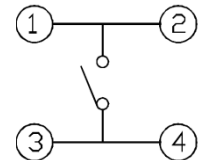
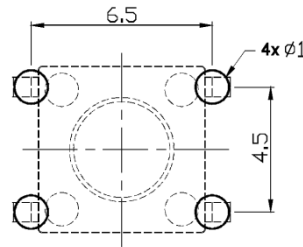
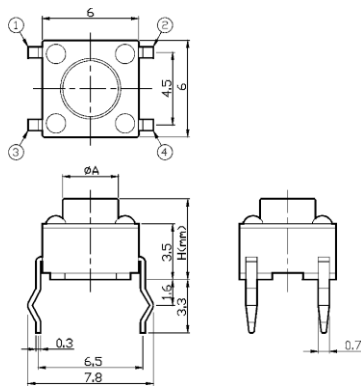
<b>Código</b>	<b>Posição de operação</b>	<b>Tipo de montagem</b>
IT-1102	VERTICAL	INSERÇÃO
IT-1102P	VERTICAL	INSERÇÃO
IT-1102H	HORIZONTAL	INSERÇÃO
IT-1102N	HORIZONTAL	INSERÇÃO
IT-1102NS	HORIZONTAL	INSERÇÃO
IT-1102S	VERTICAL	SMD
IT-1102W	VERTICAL	SMD
IT-1102US	HORIZONTAL	SMD
IT-1102V	HORIZONTAL	INSERÇÃO
IT-1102M	HORIZONTAL	INSERÇÃO
IT-1102US10	HORIZONTAL	INSERÇÃO
IT-1102RT	VERTICAL	ENFITADO

Código

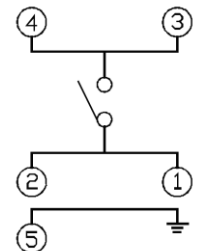
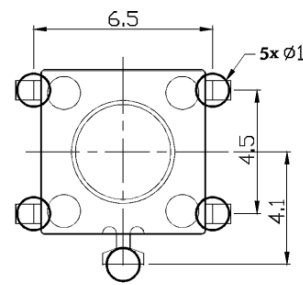
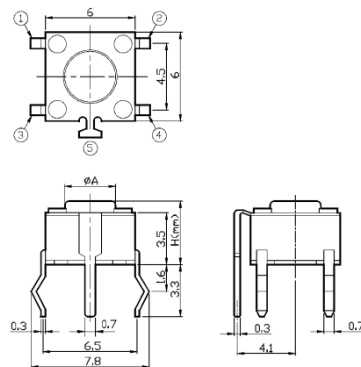
Modelo acionamento horizontal			Modelo acionamento vertical				
	H	∅A		H1	H2	∅A	
	-	4.3	3.5	-	3.15	4.3	3.5
	AS	4.5	3.5	AS	3.35	4.5	3.5
	A	5.0	3.5	A	3.85	5.0	3.5
	AL	5.5	3.4	AL	4.35	5.5	3.4
	Q	6.0	3.4	Q	4.85	6.0	3.4
	QL	6.5	3.4	QL	5.35	6.5	3.4
	B	7.0	3.4	B	5.85	7.0	3.4
	E	7.3	3.4	E	6.15	7.3	3.4
	EL	7.5	3.4	EL	6.35	7.5	3.4
	C	8.0	3.4	C	6.85	8.0	3.4
	CL	8.5	3.4	CL	7.35	8.5	3.4
	DS	9.0	3.4	DS	7.85	9.0	3.4
	D	9.5	3.4	D	8.35	9.5	3.4
	DL	10.0	3.0	DL	8.85	10.0	3.0
	KS	10.5	3.0	KS	9.35	10.5	3.0
	K	11.0	3.0	K	9.85	11.0	3.0
	KL	11.5	3.0	KL	10.35	11.5	3.0
	FS	12.0	3.0	FS	10.85	12.0	3.0
	F	12.5	3.0	F	11.35	12.5	3.0
	FL	13.0	3.0	FL	11.85	13.0	3.0
	G	13.5	3.0	G	12.35	13.5	3.0
	O	14.0	3.0	O	12.85	14.0	3.0
	X	14.5	3.0	X	13.35	14.5	3.0
	Y	15.0	3.0	Y	13.85	15.0	3.0
	Z	16.0	3.0	Z	14.85	16.0	3.0
	J	16.3	3.0	J	15.15	16.3	3.0
	I	17.0	3.0	I	15.85	17.0	3.0
	T	□ 2.4 × 2.4		T	□ 2.4 × 2.4		
	TA	□ 2.8 × 2.8		TA	□ 2.8 × 2.8		

Modelo      Dimensões      Furação      Diag. elétrico

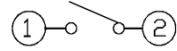
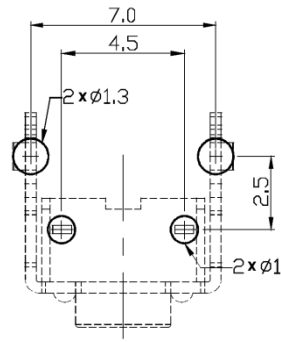
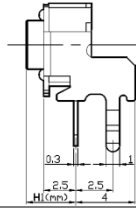
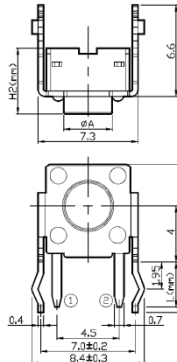
IT-1102



IT-1102P

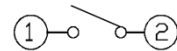
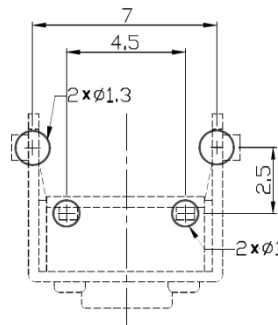
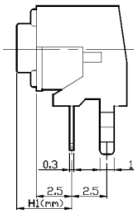
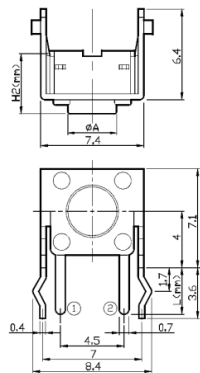


**IT-1102H**

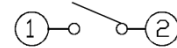
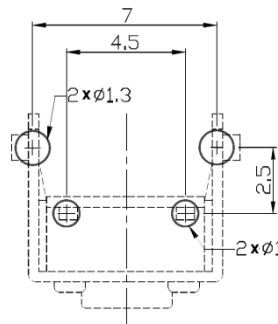
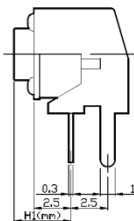
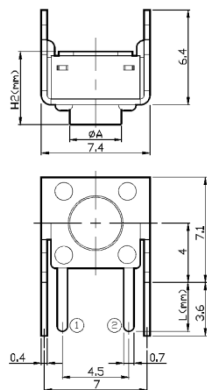


**Modelo**                      **Dimensões**                      **Furação**                      **Diag. elétrico**

**IT-1102N**

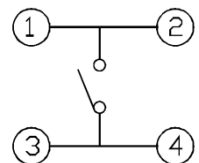
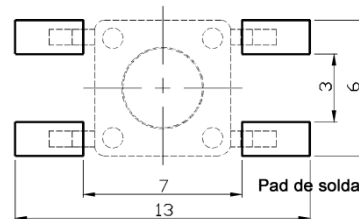
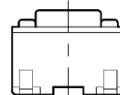
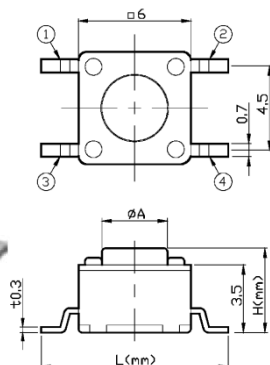


**IT-1102NS**



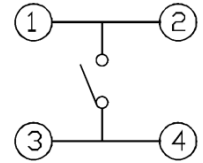
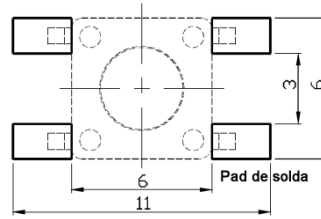
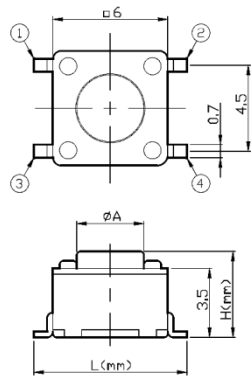
**IT-1102S**

L = 9 ou 10mm



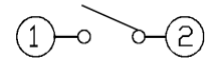
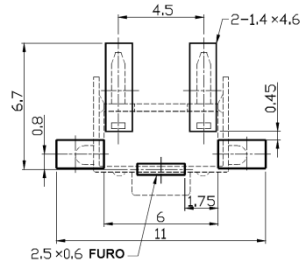
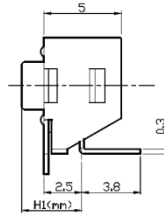
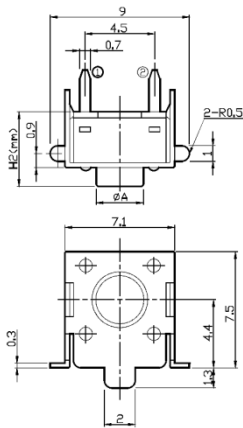
**IT-1102W**

L = 8 ou 9mm

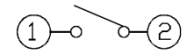
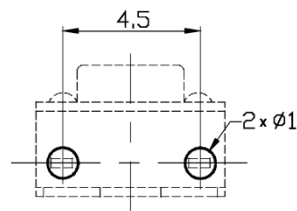
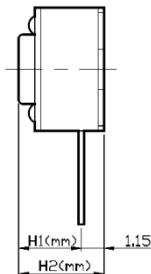
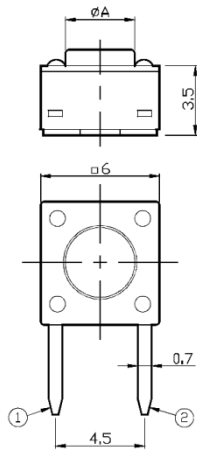


**Modelo**                      **Dimensões**                      **Furação**                      **Diag. elétrico**

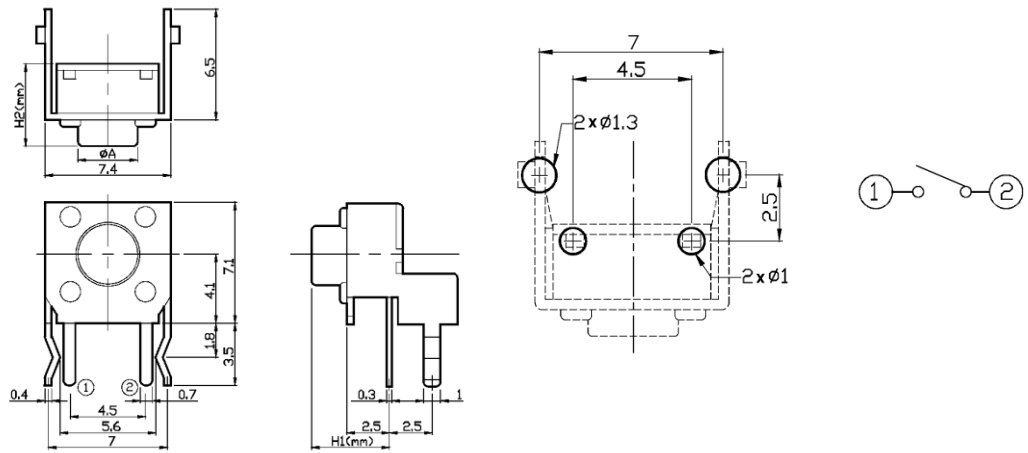
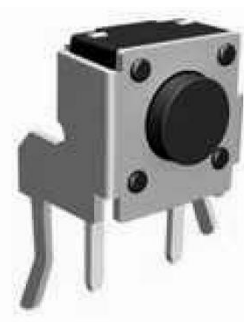
**IT-1102US**



**IT-1102V**



IT-1102M



Modelo	Dimensões	Furação	Diag. elétrico
--------	-----------	---------	----------------

IT-1102US10

